

PANEL CLICK BUTTON CONNECTOR

Application

The Panel Click button connector is perfect for mounting ceiling and wall panels in areas with minimal frame and panel thickness. To be fixed by screws $\varnothing 5$ mm or glue.

Specification

Grey PC material

Size

20,5 x 20,5 mm
Screw holes $\varnothing 5$ mm

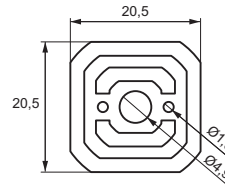
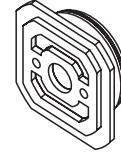
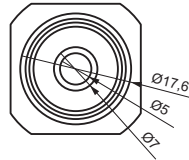
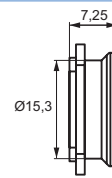
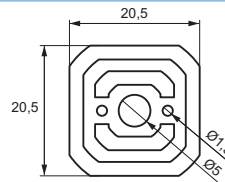
Easy installation by use of locator button
10 mm panel distance after mounting
Max pull out load 5 kg. per. button.

Item No.

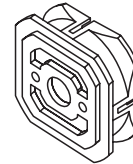
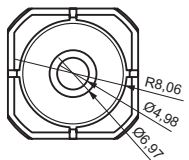
Male # 11.05.818-5 (without screws)
Female # 11.05.819-5 (without screws)

Locator button to be bought separately

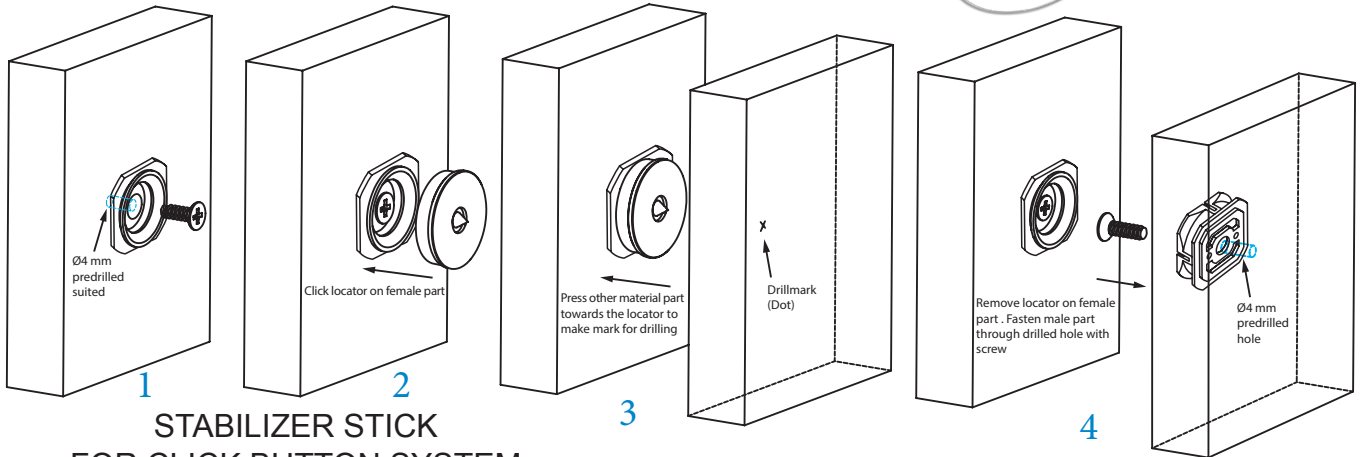
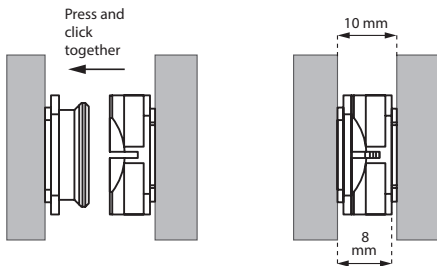
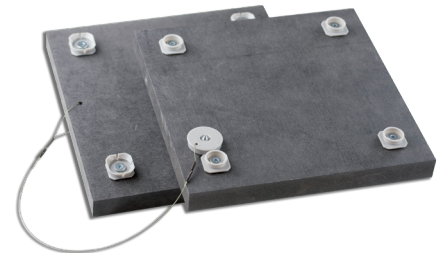
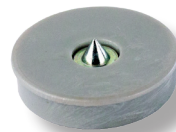
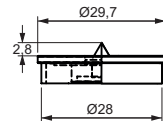
Item No. # 11.05.821



Female



Locator button



STABILIZER STICK FOR CLICK BUTTON SYSTEM

Application

Used to stabilize and strengthen the edges of the panels

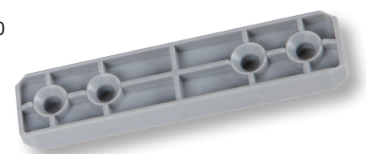
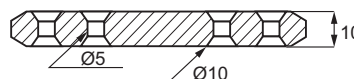
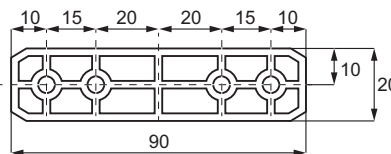
Specification

Grey PC material

Size

20 x 90 mm
Screw holes $\varnothing 5$ mm

Item No. # 11.05.825



SISO A/S